

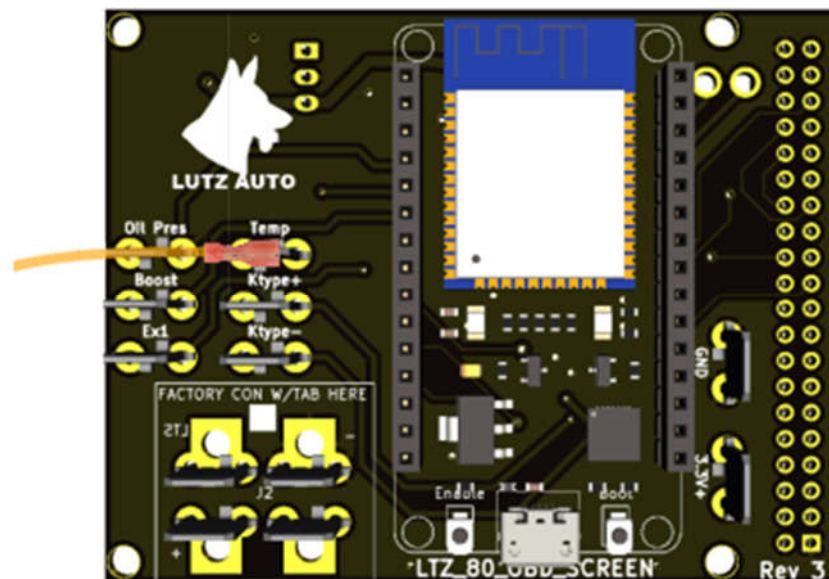


# LTZ-80-OBD-TEMP

## Installation Notes

*Caution: Read through these notes before starting the installation of this sensor. This kit does involve some dash disassembly, electrical, and mechanical skills. If you are uncertain of whether you can install this sensor or not, bring the kit to a specialized automotive mechanic for install. The readings produced by this sensor are to be used as a reference only and the readings are not to be relied upon for accuracy. Lutz Auto is not responsible for any miscalibration or issues resulting from incorrect readings.*

The sensor needs to be wired according to the wiring diagram below. The sensor will replace the drain plug in the transmission. Be sure to use the supplied crush washer when installing the temperature sender in the transmission oil pan. The drain plug torque spec in the factory service manual is 15 ft·lbf.



The supplied orange wire and spade connectors should be used to connect the “Temp” spade from the back of the multigauge to the temperature sensor.